

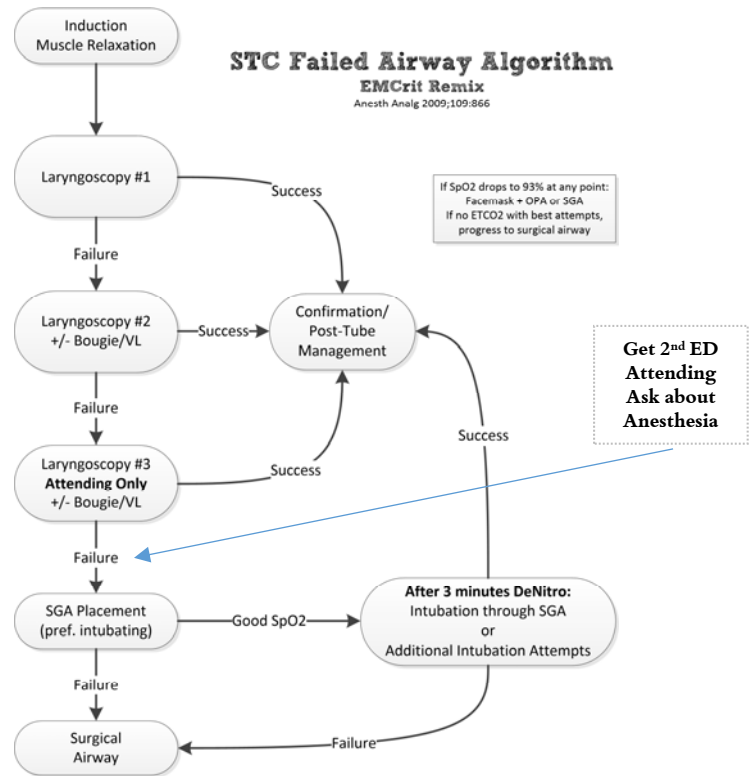
Pre-RSI Checklist

- Physio Issues (HOp) Considered
 - Induction Agent/Muscle Relaxant
 - Post-Tube Analgesia/Sedation
 - ± Push-Dose Epi
 - Failed Plan Verbalized
 - Cric Evaluation**
- Plan

- Denitrogenated ≥ 3 minutes
 - ApOx with NC @15**
 - Oxygenated ≥ 95% (± CPAP)**
 - Look in Mouth · Dentures · Range Neck
 - Positioning**
 - Pulse Ox Visible/Audible, not on BP arm
 - Access - Reliable & Tested
- Patient

- Kit Dump on Table
 - BVM (± PEEP Valve) on Oxygen
 - Waveform Capnograph on BVM**
 - Video Laryngoscope
 - Backup Laryngoscope
 - OPA, Bougie, SGA, Scalpel**
 - Suction x 2
- Equipment

- ELM/Head Elev./Collar Briefing
 - Eye/Face Protection**
- Team



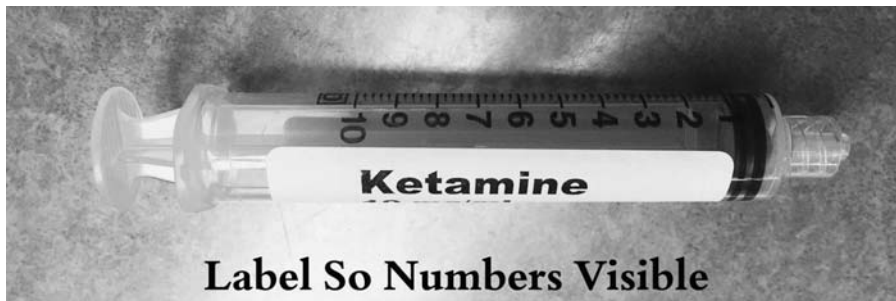
Only Announce Saturations

at **90-80-70%**. When below 70% announce every 20 seconds, "The saturation is below 70%"

How to Draw Up Meds

Unless otherwise specified by the intubators, empirically draw up the following and place pre-printed label:

- Ketamine 20 mls in 20 ml syringe
- Rocuronium 10 ml in 10 ml syringe
- Succinylcholine 10 ml in 10 ml syringe
- Propofol 20 mls in 20 ml syringe
- Etomidate 10 ml in 10 ml syringe



Airway Debrief

Pt Name:
MRN:
Date:

Instructions: Fill this form out after intubation and stabilization. Discuss with all members involved in the intubation. This process should take < 2 minutes.

<i>Attempt #</i>	Performed By (intubator's name)
<i>1</i>	
<i>2</i>	
<i>3</i>	
<i>4</i>	

Question	Yes	No
Did the team feel like this was a difficult airway?		
If yes, why?		
Was there a desaturation < 80% with good waveform?		
Was there any vomiting after the administration of RSI Drugs?		
Was this a Delayed Sequence Intubation (DSI)?		
Was this an awake intubation?		
Was Anesthesia Called (except for Code T)?		
If yes, why?		
Was a supraglottic airway placed to rescue a failed airway?		
Was a cricothyrotomy performed?		
If a cric is performed, please immediately email [me@emcrit.org] with MRN and patient location		

In the opinion of the team, was there anything that could have been done better?

Place this Form in the Folder in the Clinicians' Office

Do Not Scan or Place in Chart